

Hello Arrowbear Elementary Campers!

Albert and I want to make sure that you have an incredible musical experience while you're here at Arrowbear with us. In order to do that, it is important for you to have a functioning instrument and the correct accessories. Please check the list below to ensure you come to camp prepared. If you have any questions about the list, email Kevin at khamilton@lbschools.net We can't wait to see you in August!

Sincerely,

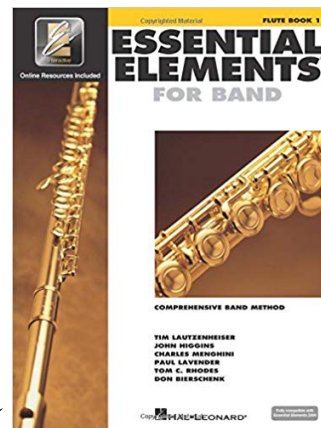
Kevin and Albert

String players need:

- A well functioning, shop adjusted instrument
- A set of extra strings
- Rosin
- A pencil
- Violin and viola players need a shoulder rest
- Cello players need an endpin stop/strap

Wind players need:

- A well functioning, shop adjusted instrument
- Method book - Essential Elements for Band - Book One (select the correct instrument)
- A pencil
- Good quality accessories
 - Clarinet and Saxophone players need quality reeds, size 2.5 (Rico, Juno, Mitchell Lurie, and Vandoren brands are great. Avoid Glory, Cecilio, Kmise, Eastar, Lazarro, Tanbi Music, Ammoon, or any others in that look similar.)
 - Trumpet and French horn players need valve oil.
 - Flute, Clarinet, and Saxophone players should have a cleaning swab to remove moisture after playing.



Percussionist need:

- A pencil
- Method book - Essential Elements for Band - Book One (select the correct instrument)
- Vic Firth 5B or SD1 drumsticks and a practice pad (Any pad similar to a Remo RT-0008-00 8" is fine)

Welcome to Camp!

Arrowbear Information Packet Elementary Session August 11-15, 2019

Thank you for choosing to make us a part of your summer adventures.

We can't wait to see you in the mountains!

Please see the attached email
for your specific camp arrival time.

Happy camping ☺

~The Arrowbear team~



Packet Contents:

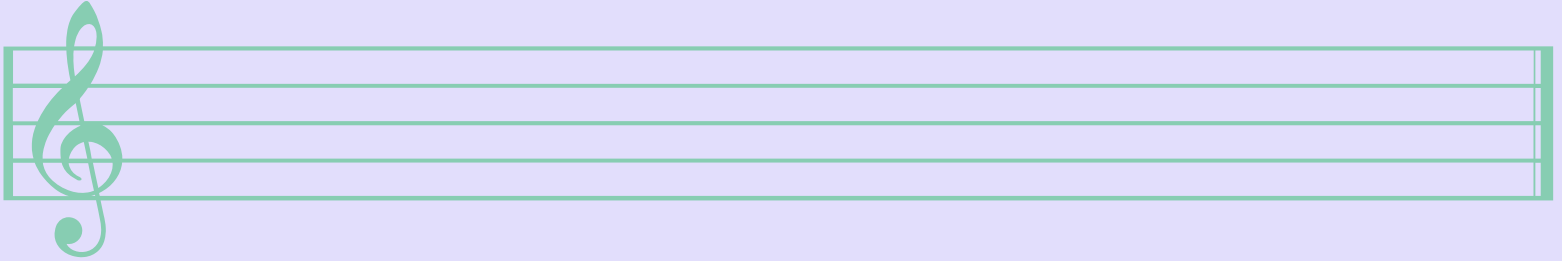
-Pre-camp Checklist.....	p. 1
-Arrival and Departure Information.....	p. 1
-Directions to Camp.....	p. 2
-Tuition Balance and Scholarship Information.....	p. 2
-Medication Information.....	p. 2
-General Camp Information.....	p. 2-4
• auditions	
• communication policies	
• photos and group roster (the 'note')	
• snack bar and camp store	
• sleeping arrangements	
• visiting policies	
-Packing List.....	p. 5

Information at a Glance:

- Camp office phone: 909-867-2782
- Larke's cell phone: 562-225-7766
- August 6th: balance and completed health form due
- August 11th: Arrival Day- check email body for specific drop-off time
- August 15th: Pick up day- noon concert
- Camp's mailing address: PO Box 180, Running Springs, CA 92382
- Camp's physical address 33500 Music Camp Rd., Arrowbear Ik, CA 92382

Pre Camp Check List

- Balance paid- due in full by August 6th
- Packing list double checked
- Online Health Form completed and up to date
- Campers who have attended Arrowbear in previous summers- please check that your health information is current and that your musical questionnaire is up to date
- Medications must be included in your online account, properly labeled, and ready to turn in



Arrival and Departure Information

First Day of Camp: August 11th

Due to limited parking, we assign arrival times based on enrollment date. Check email body for your arrival time. If you arrive early, please head back into town for a nice cup of joe or a yummy snack at a local diner such as Blondie's Grille.

Please be sure that your child has eaten a good lunch. The first meal served at camp will be dinner at 5:30pm, and we will have an active afternoon.

Last Day of Camp: August 15th- Final Concert at Noon:

The Final Concert will be held at noon on campus. Guests may arrive anytime after 11:00am. Please do not arrive early as our program will still be in session and camp will be inaccessible.

Parking:

Final concert parking will be stacked, filling much of the paved areas in camp. Camp staff will be available to direct- look for the folks in the orange vests. If you wish to be closer to the exit, please arrive closer to concert time. Thank you in advance for being patient with our parking system.

Please, for our legal compliance and safety, no dogs are allowed on campus except for registered service dogs.

Carpool:

If you are interested in carpooling, please let us know and we will email your name, contact information, and location to everyone on our elementary roster 1 week before the session begins.

Driving Directions to Camp

If you are not familiar with how to get to camp, make sure to bring a copy of these directions with you. Some GPS devices give inaccurate directions.

Physical address: 33500 Music Camp Rd, Arrowbear, CA 92382

From I-210 in Highland, take HWY 330 towards Big Bear. After winding up the mountain road, continue through the small towns of Running Springs and Arrowbear.

Turn right at the second Arrowbear Drive (on the corner you will see a chain link fence and Blondie's Bar and Grille).

If you reach a sign for Green Valley or Snow Valley Ski Resort, you have gone too far.

Stay to the left of the small pond (it will most likely be a dirt field by August) and continue up Music Camp Road until you reach the camp. We have a large, green, and brown "Arrowbear Music Camp" sign at the entrance to the camp.

Follow signs to the check-in station.

Tuition Balance and Scholarship Information:

Tuition Fees:

Your remaining balance must be paid by August 6th.

Scholarships:

If you paid in full for camp and then received an Arrowbear Music Associates scholarship, your scholarship check will be handed to you during check-in. If a parent or guardian is not present to pick up the check we will mail it the following day.

If you received a scholarship from an organization other than AMA, please make sure camp has received all necessary paperwork.

Arrowhead Arts Recipients- your online balance will be updated as soon as we receive the scholarship recipient list from Arrowhead Arts.

Medication Information :

All medications must be recorded in your online account and turned into the Camp Health Care Manager at check-in. This includes over the counter medications and is for legal compliance and camp safety. Medications must be in their original, labeled containers or they will not be administered. If you transfer pills into daily pill containers, make sure to provide the original prescription bottle.

General Camp information:

Part of our camp philosophy is that a residential camp offers a unique opportunity to meet new people in a special environment. We understand that many campers come with friends or family they would like to spend time with. We balance this experience with recreation activities where we intentionally mix campers with others that they did not know before arriving. Even so, campers should have ample time to spend with whom they arrived.

Auditions:

Each camper will meet with our music staff for an audition. This will help our teachers understand the needs of each camper. If you are currently working a solo and scales, please bring the music.

Please do not worry about the audition. Camp is very supportive and noncompetitive environment. :)

Communication with campers:

Old fashioned snail mail:

Campers love to receive mail while at camp!

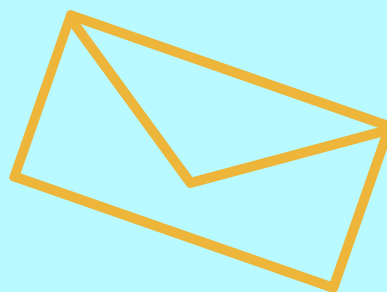
Please mail to-

Camper's Name

c/o Arrowbear Music Camp

PO Box 180

Running Springs, CA 92382



Alternatively, family and friends are welcome to leave mail with the camp office to be placed in the camper's mailbox on a specific day.

Any mail that arrives after the session ends will be returned to sender.



One way emails through your online account:

Log into your account through our website by choosing "parent login".

Once logged in, choose "additional options" on the upper right hand side. Choose "Email a camper" from the drop down menu. Emails will be printed and placed in the camper's mailbox daily.

Messages:

What if I leave a message for my camper through the camp office?

Messages received via email, text, or phone call will be placed in the camper's mailbox daily.

Cell Phones:

Because the campers will be very busy playing music, making friends, and enjoying the camp environment, we do limit phone use to a quick evening call home between 6:00 and 6:20.

For campers who bring a phone, it must be turned off and checked in during registration.


For campers who do not bring a phone, we have a camp phone that may be used for calls.

Phone policy:

Beginning Monday, August 12th-

- Designated photo taking opportunities (hikes, pool time, arts and crafts, trips to the park, etc.) will be organized daily with counselor supervision. You may also view camp photos in our ultracamp photo album.
- Phones may be used between 6:00 - 6:20pm for phone calls home (beginning August 12th)





Daily Camp Photos:

Starting on Monday, August 12th, we will upload session photos to your online account. Check back daily at 10am for new uploads. Log into your online account through our website and choose 'Additional Options' on the upper right hand side. Choose 'Photo Gallery' from the drop down menu.

Camp Store

During free time we sell a small assortment of snacks and camp gear. All money must be turned into the camp for safekeeping. A debit system will be used for purchases and the remaining balance will be returned on the last day. We accept cash, check, money order made out to Arrowbear Music Camp, or credit card through ultracamp. For a 4 day Elementary Session we recommend \$5-\$30.

To add money through credit card online: Log into your account from our website and click 'additional options' in the upper right hand side.

Prices-

Snacks/Soda \$1-\$4

T-shirts \$15

Sweatshirts \$25-\$30

Other camp gear \$3-\$25

The camp store will be open before and after the concert. At this time we will accept credit card payments.

Commemorative Photo and Camp Roster

At the end of the session we will provide all the campers with a group photo and roster including contact information for all campers and staff. If you wish to have your contact information left off the roster, please let us know.



Sleeping arrangements

We cannot make sleeping arrangements in advance. There is plenty of space for friends to be near each other or hey- make a new friend. You never know, a new bunkmate could be a new friend for life. Bunks are chosen on a first come first serve basis.

Visitors

We discourage visiting as it detracts from the camp experience. Visits are only permitted with prior permission from the camp office. The camp day to day activities may vary from the posted schedule.

Thank you!

We are looking forward to seeing you all!

P.S. While we do love our furry four legged family members, for safety and legal reasons, please leave your doggies at home.

Packing List

Music Related

- Instrument
- Experienced players- music for audition
- Clothes pins to hold music in breezy weather
- Please see the 1st page letter from conductors Kevin Hamilton and Albert Jeung for additional musical supplies

Bedding

- Warm Sleeping Bag- temps may drop below the 40's- please pack accordingly
- Pillow

Clothing

- Enough comfortable outdoor clothing for 4 days-
Example:
- Jeans/ Long Pants
- Shorts
- T-shirts/ Tank Tops
- Sweat shirt/ Sweater
- Pajamas
- Socks
- Underwear
- Closed-toe Shoes (hiking boots/ tennis shoes)
- Bag or Collapsible Hamper to hold dirty clothing
- Concert clothes: slacks/ khakis or skirts; blouse, polo or other collared shirt

Toiletries

- Towel and Washcloth for shower
- Shower Sandals (flip flops)
- Toothbrush and Toothpaste
- Shampoo/Conditioner and Soap
- Sunscreen and Chapstick
- Bug repellent
- Any other personal items you may need

Miscellaneous

- Reusable Water Bottle (or purchase one at our camp store)
- Flashlight or Headlamp

Optional

- Fitted sheet (to cover vinyl mattress)
- Blankets
- Swimsuit
- Pool towel
- Hat
- Sunglasses
- Hiking boots/ Hiking Gear
- Sandals
- Snack food in a labeled container
- Stamps and Envelopes
- Camera
- Books/ Magazines
- (during our daily rest period campers may sleep, read, or listen to music- pack accordingly)

Make sure to label all belongings with the camper's name. Aside from your instrument, please leave all valuables at home. Arrowbear Music Camp will not be held responsible for lost money or valuables.